

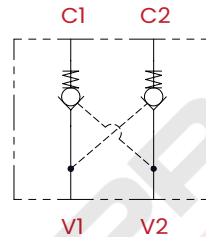
# VPF CHECK VALVES BSPP

## DOUBLE ACTING PILOT CHECK VALVES - FLANGED VERSION

VPF pilot check valves are used to lock a double acting actuator in place in both directions, ensuring the load is locked.



### HYDRAULIC CIRCUIT



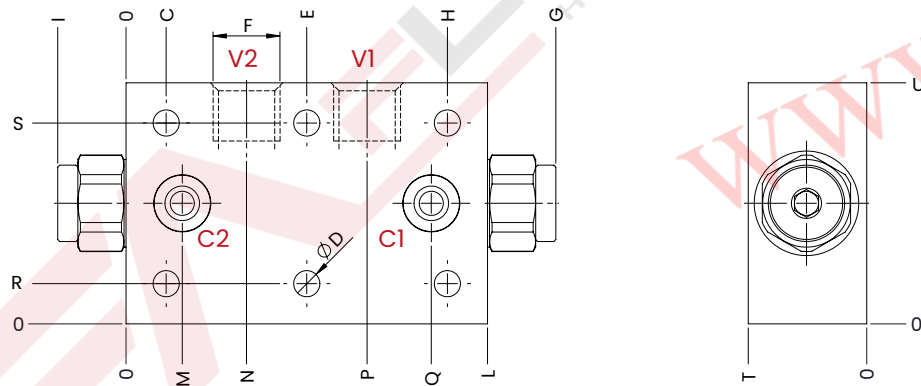
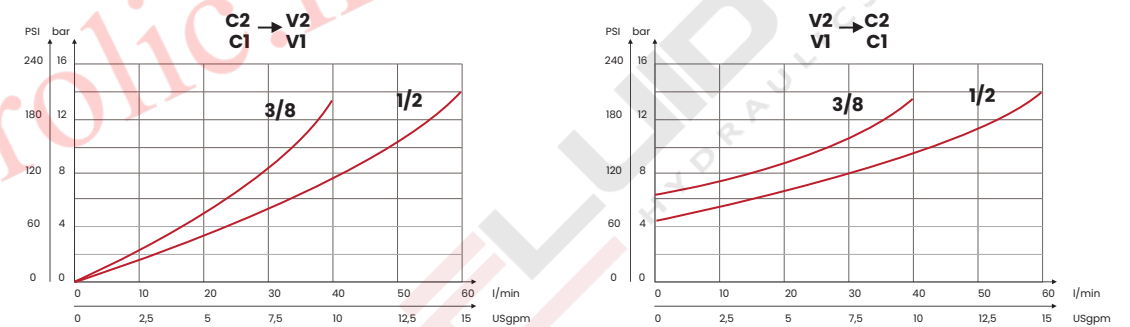
### TECHNICAL CHARACTERISTICS

mm [Inches]

F	C	ØD	E	G	H	I	L	M	N	P	Q	R	S	T	U
3/8 BSPP	10 [0,39]	6,5 [0,25]	45 [1,77]	107 [4,21]	80 [3,15]	17 [0,67]	90 [3,54]	14 [0,55]	30 [1,18]	60 [2,36]	76 [2,99]	10 [0,39]	50 [1,97]	29,5 [1,16]	60 [2,36]
1/2 BSPP	15 [0,59]	8,5 [0,33]	55 [2,16]	132 [5,19]	95 [3,74]	22 [0,86]	110 [4,33]	22,5 [0,89]	37 [1,45]	73 [2,87]	87,5 [3,44]				

Steel body (on request aluminium body)

### PERFORMANCES



mm [Inches]

### ORDERING CODE

CODE	TYPE	F ports	MAX FLOW l/min [USgpm]	MAX PRESSURE bar [PSI]	PILOT RATIO	CRACKING PRESSURE bar [PSI]	WEIGHT kg [lb]
FA5012	VPF2B	3/8 BSPP	35 [9,2]	350 [5075]	1:3,3	4,5 [65]	1,2 [2,64]
FA5014	VPF3B	1/2 BSPP	60 [15,83]		1:4		1,45 [3,20]

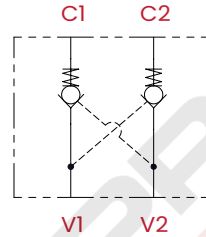
UPDATE: Sept. 2024 (v.05)

## DOUBLE ACTING PILOT CHECK VALVES

VPD pilot check valves are used to lock a double acting actuator in place in both directions, ensuring the load is locked.



### HYDRAULIC CIRCUIT



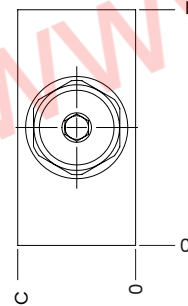
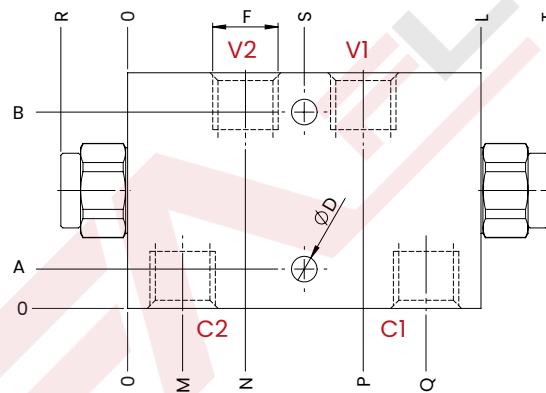
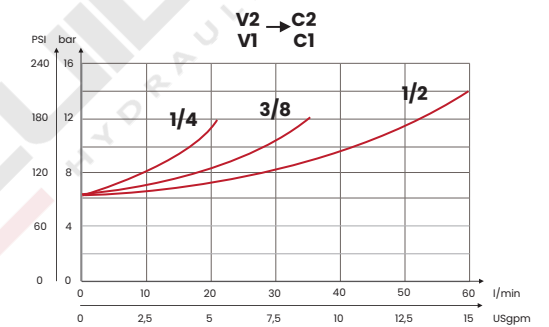
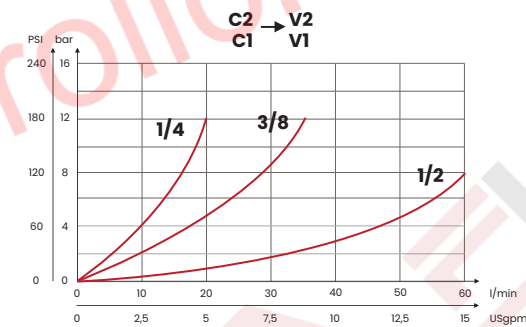
### TECHNICAL CHARACTERISTICS

mm [Inches]

F	A	B	C	E	L	M	N	P	ØD	Q	R	S	T
1/4 BSPP					90 [3,54]	14 [0,55]	30 [1,18]	60 [2,36]	6,5 [0,25]	76 [3]	17 [0,67]	45 [1,77]	107 [4,21]
3/8 BSPP	10 [0,39]	50 [1,97]	30 [1,18]	60 [2,36]									
1/2 BSPP					110 [4,33]	20 [0,78]	37 [1,45]	73 [2,87]	8,5 [0,33]	90 [3,54]	22 [0,86]	55 [2,16]	132 [5,19]

Steel body (on request aluminium body)

### PERFORMANCES



mm [Inches]

### ORDERING CODE

CODE	TYPE	F ports	MAX FLOW l/min [USgpm]	MAX PRESSURE bar [PSI]	PILOT RATIO	CRACKING PRESSURE bar [PSI]	WEIGHT kg [lb]
FA5039	VPD1B	1/4 BSPP	20 [5,3]	350 [5075]	1:3,3	4,5 [65]	1,23 [2,70]
FA5011	VPD2B	3/8 BSPP	35 [9,2]				1,2 [2,64]
FA5013	VPD3B	1/2 BSPP	60 [15,83]		1:4		1,45 [3,20]

UPDATE: Feb. 2024 (v.09)